



XORIENT HIGH TECH SCM

CLIENT OVERVIEW

Our client is a Silicon Valley based provider of advanced materials, process technology, and manufacturing systems for next-generation wireless devices, including cell phones, notebook PCs, and consumer electronics. These processes and products are based on unique and proprietary semiconductor and optical process technologies. This proprietary technology allows controlled and precise application of single or multiple material film layers. This technology will be incorporated into next-generation devices and consumer electronics.

KEY REQUIREMENTS

- Delay in delivery due to manual allocation to production lines
- Lack of automated alerts in case of a problem in the production line
- Lack of automated scheduling and rescheduling of the production process through software
- Ineffective utilization of time due to frequent visits to the shop floor
- Delays and errors due to manual report generation through consolidation of multiple excel sheets

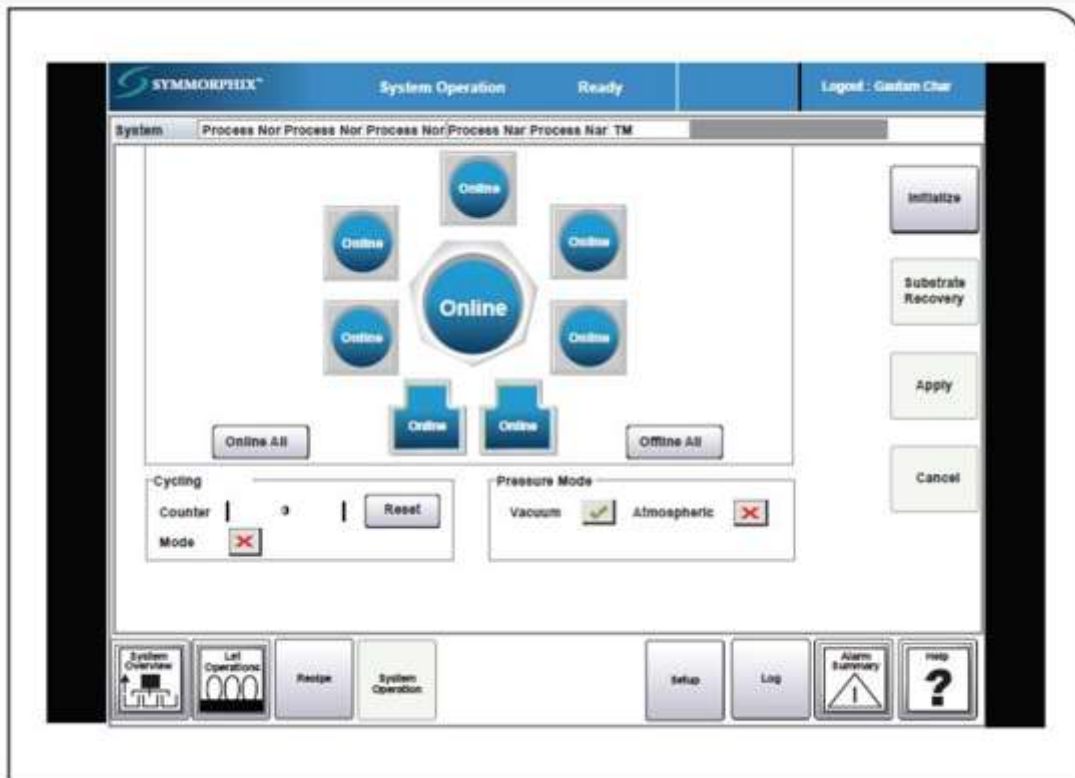
KEY CONTRIBUTIONS

- Xoriant team members created a simple architecture to ensure connectivity and data exchange between the different client systems.
- Xoriant developed a GUI system, with touch screen capabilities, independent of the database.
- Xoriant developed a touch screen based application on Microsoft .Net that helped the manager plan and execute the shop floor operations.
- Locking mechanism implemented using memory-mapped cache addressed the security aspect.

KEY BENEFITS

- Comprehensive data integration across multiple systems and real-time visibility provided our client with the much needed information systems platform to automate the manual processes for manufacturing, shop floor management and supply chain management.
- The graphical user interface showed the real-time status of the process, inventory and logistics in highly visible colors and patterns, using which the operator and plant manager could take quick and informed actions.
- The touch screen let the plant manager manage the complete shop floor operations from his/her place thus saving time.
- The system generated an alarm upon any outage. The system gave the plant operator a facility to re-route the manufacturing activity to any other machine from anywhere using a browser based interface.

HIGH LEVEL ARCHITECTURE



About Xoriant:

Xoriant Corporation is a Product Development, Engineering and Consulting Services Company, serving technology startups as well as mid-size to large corporations. We offer a flexible blend of onsite, offsite and offshore services from our eight global delivery centers with over 2000 software professionals. Xoriant has deep client relationships spanning over 25 years with various clients ranging from startups to Fortune 100 companies.